



---

# MAUK

DESIGN BY DIEGO GRANDI



LEA

SLIMTECH

↘ **MAUK SPINA**

---

13,5cm base minore  
25,8cm base maggiore  
8,7cm lati



↘ **MAUK ESA**

---

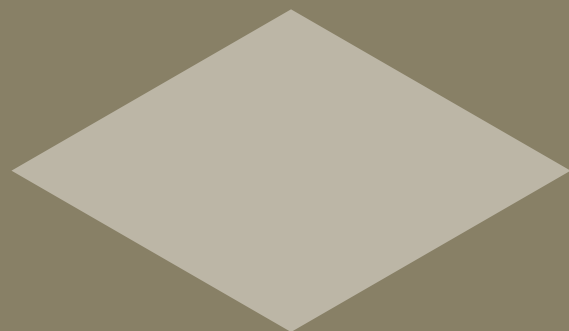
38,3cm



↘ **MAUK CUADRA**

---

57,6cm



**MAUK SPINA**

DISPONIBILE IN / AVAILABLE  
slimtech bsp sabbiata - bsp lappata

**MAUK ESA**

DISPONIBILE IN / AVAILABLE  
slimtech plus bsp naturale - bsp lappata

**MAUK CUADRA**

DISPONIBILE IN / AVAILABLE  
slimtech plus bsp sabbiata - bsp naturale - bsp lappata

↘ **MAUK CUADRA**

slimtech plus bsp sabbiata - bsp naturale - bsp lappata

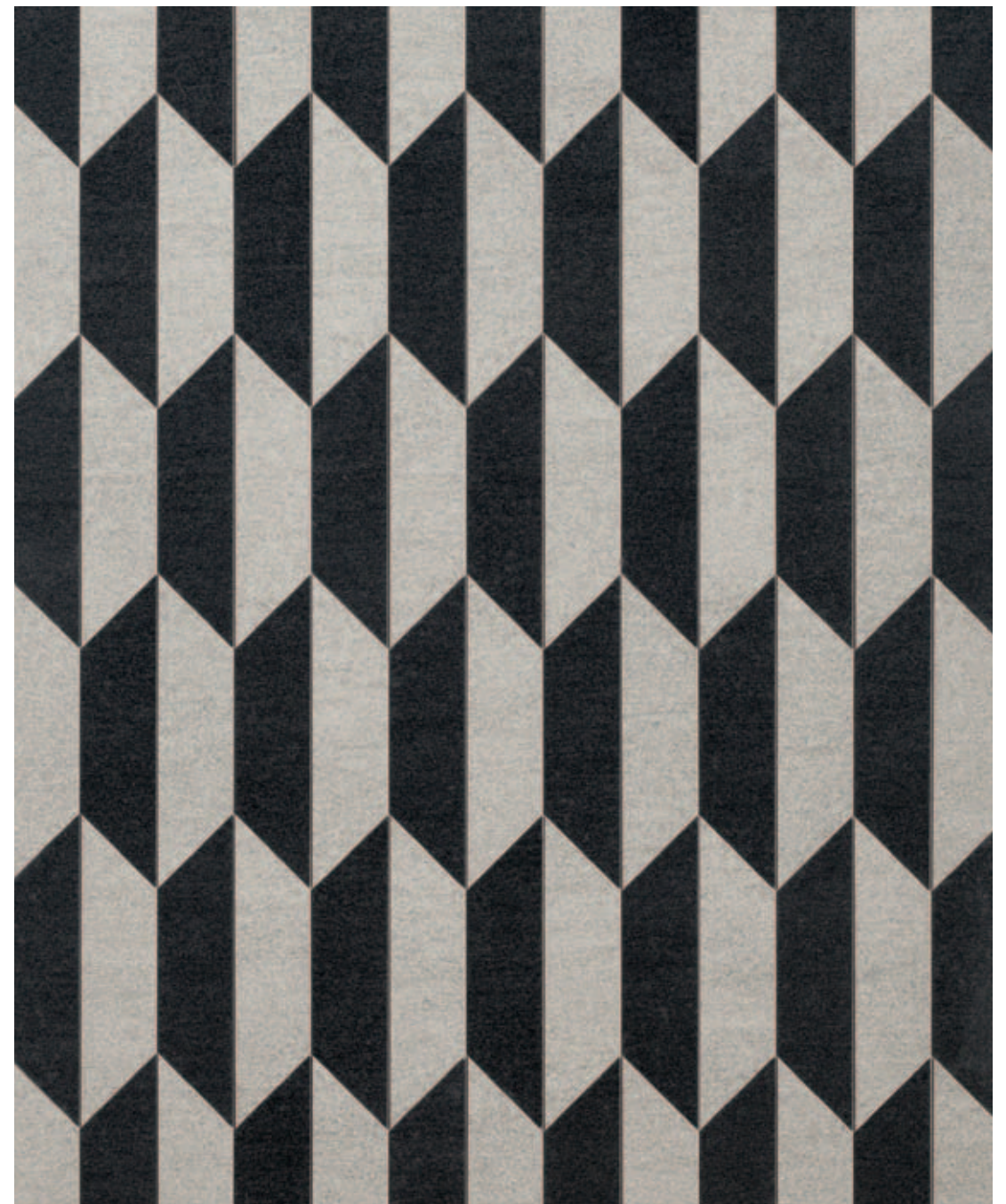


Mauk è la collezione progettata per Lea Ceramiche che rielabora il concetto di decoro a pavimento e rivestimento murale partendo dal recupero dei disegni storici di rivestimenti lignei e lapidei, spostando la natura tecnologica della lastra sottile (Slimtech) verso una maggiore domesticità. Il progetto tocca un tema importante relativo la superficie: l'idea di rottura della grande lastra (prodotta in formato 1x3metri) e il conseguente superamento dell'ortogonalità dell'elemento piastrella. Il modulo così concepito, abbandona la forma quadrata e viene restituito attraverso il triangolo, il rombo e il trapezio che nella loro composizione e fughe a contrasto evidenziano pattern inusuali, grafici e tridimensionali. La collezione Mauk cerca di dialogare con la storia reinventandone i linguaggi attraverso l'utilizzo di nuovi materiali.

*Mauk is the name of the collection created for Lea Ceramiche that redefines decors for floor and wall coverings. It evolves from the concept of using historical methods of assembling marble and wood to give particular effects to the covered surface. The project refers to an important theme regarding surfaces: the idea of breaking a large orthogonal slab (produced in 1x3m format) into shapes that are not squares or rectangles. The idea of this approach is to create a final effect based on triangles, rhombuses or trapezoids that in their assembly, give unusual patterns, designs as well as particular visual effects.*

## MAUK SPINA

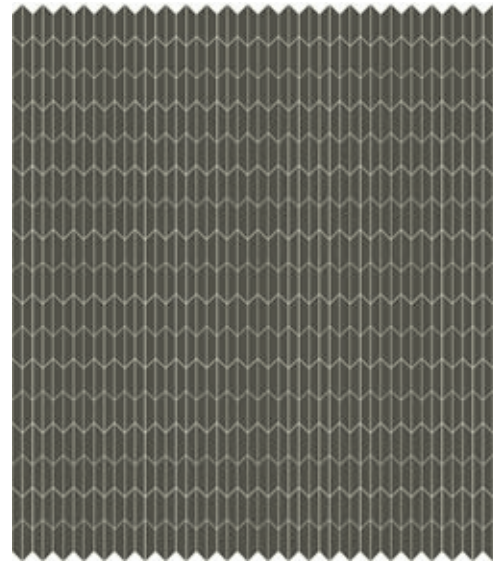
slimtech bsp sabbiata - lappata



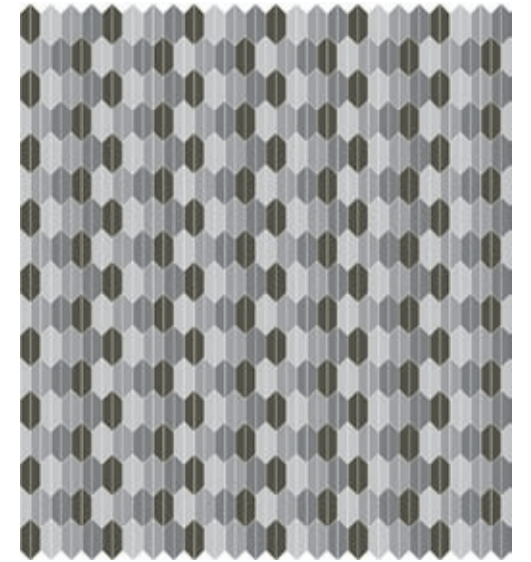


COMPOSIZIONI MAUK SPINA

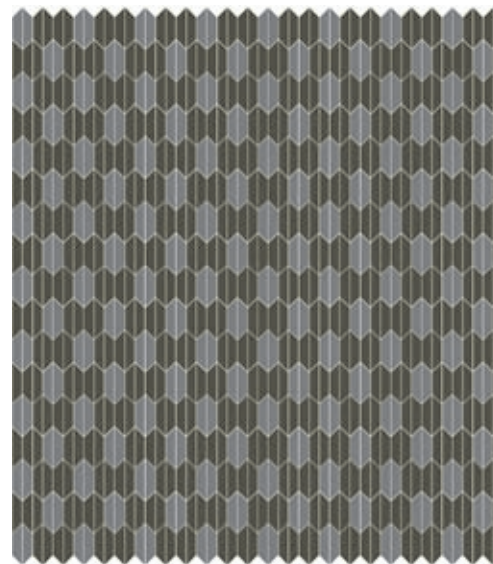
---



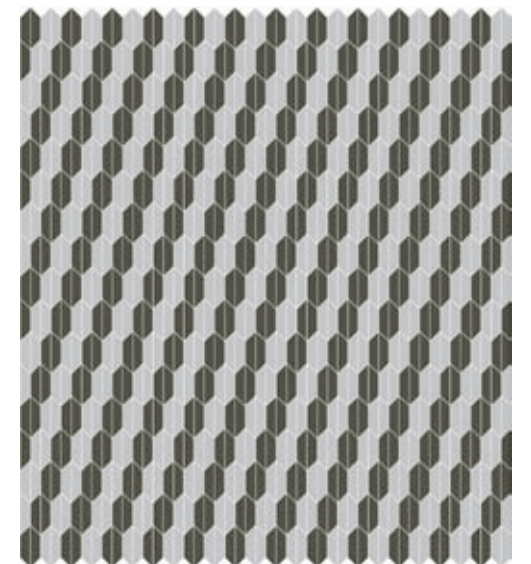
1 colore



4 colori

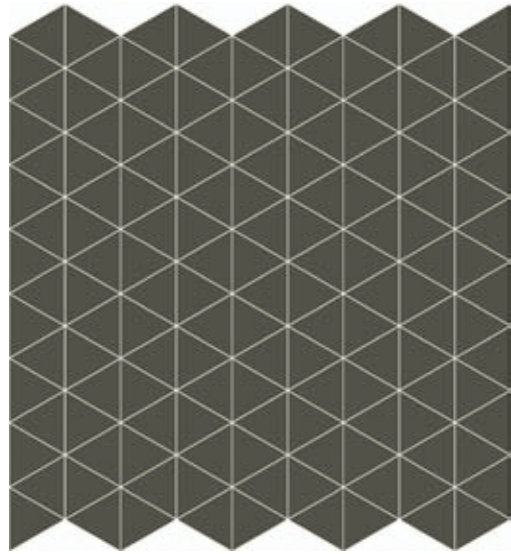


2 colori

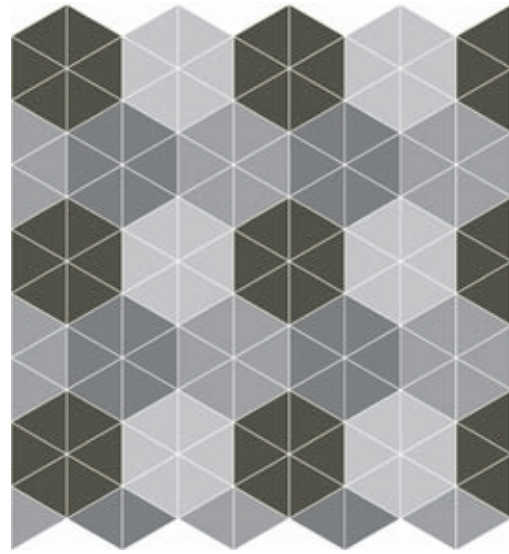


2 colori

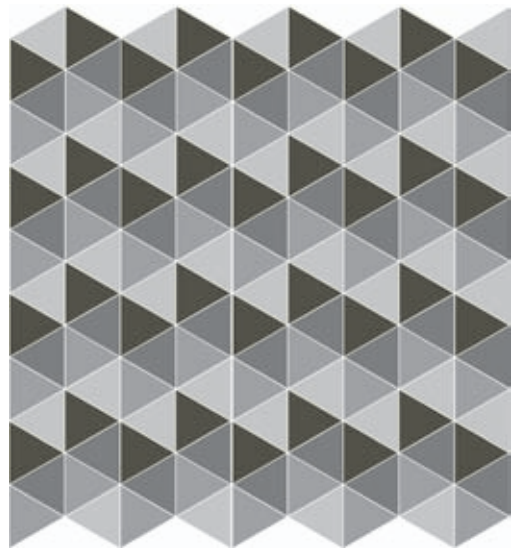
COMPOSIZIONI MAUK ESA



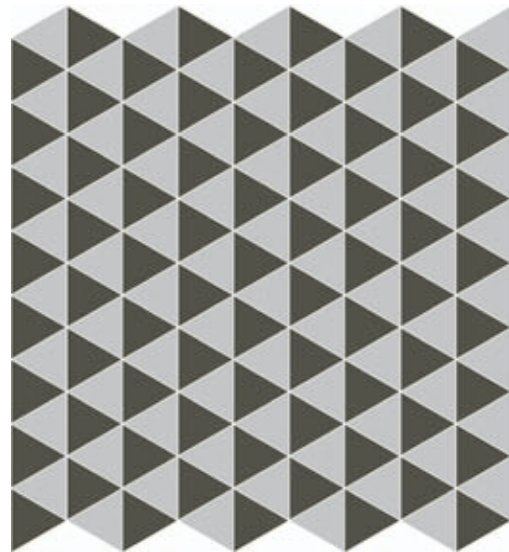
1 colore



4 colori

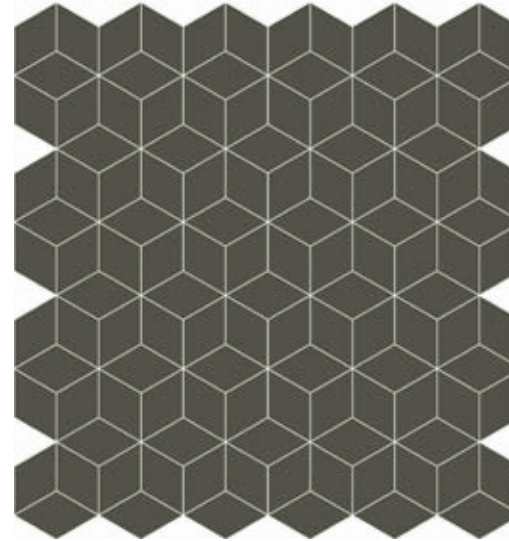


4 colori

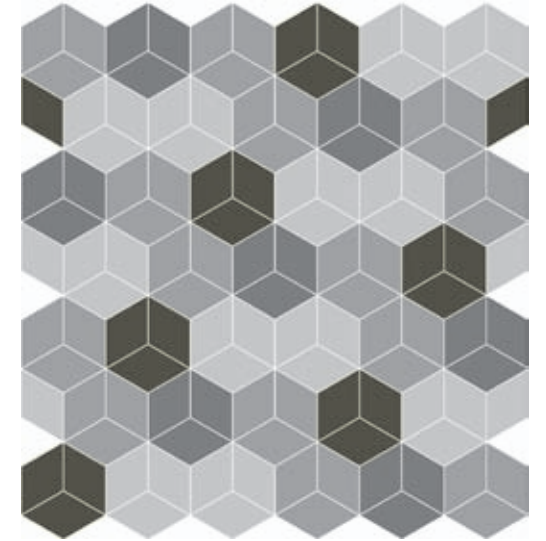


2 colori

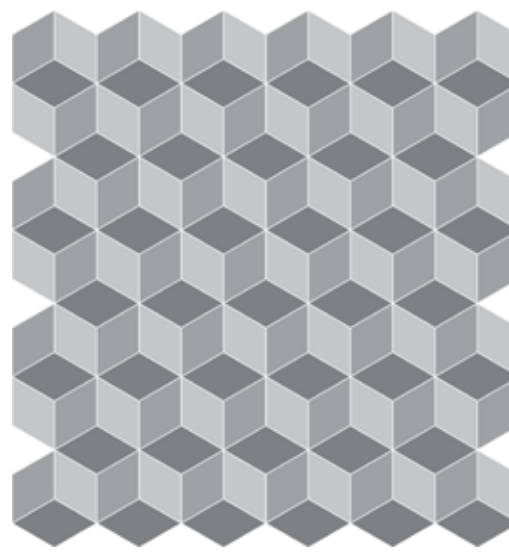
COMPOSIZIONI MAUK CUADRA



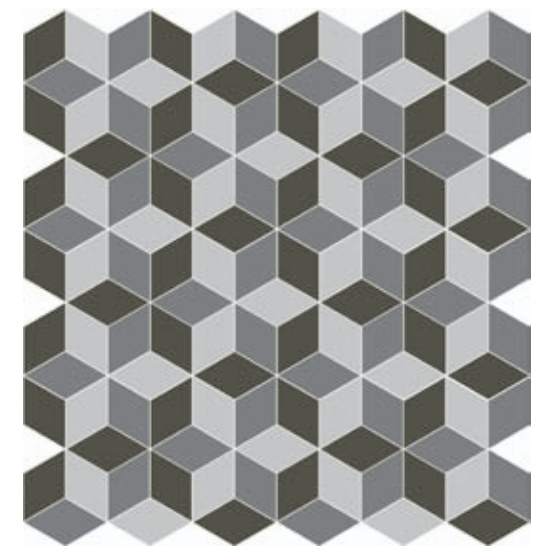
1 colore



4 colori



3 colori



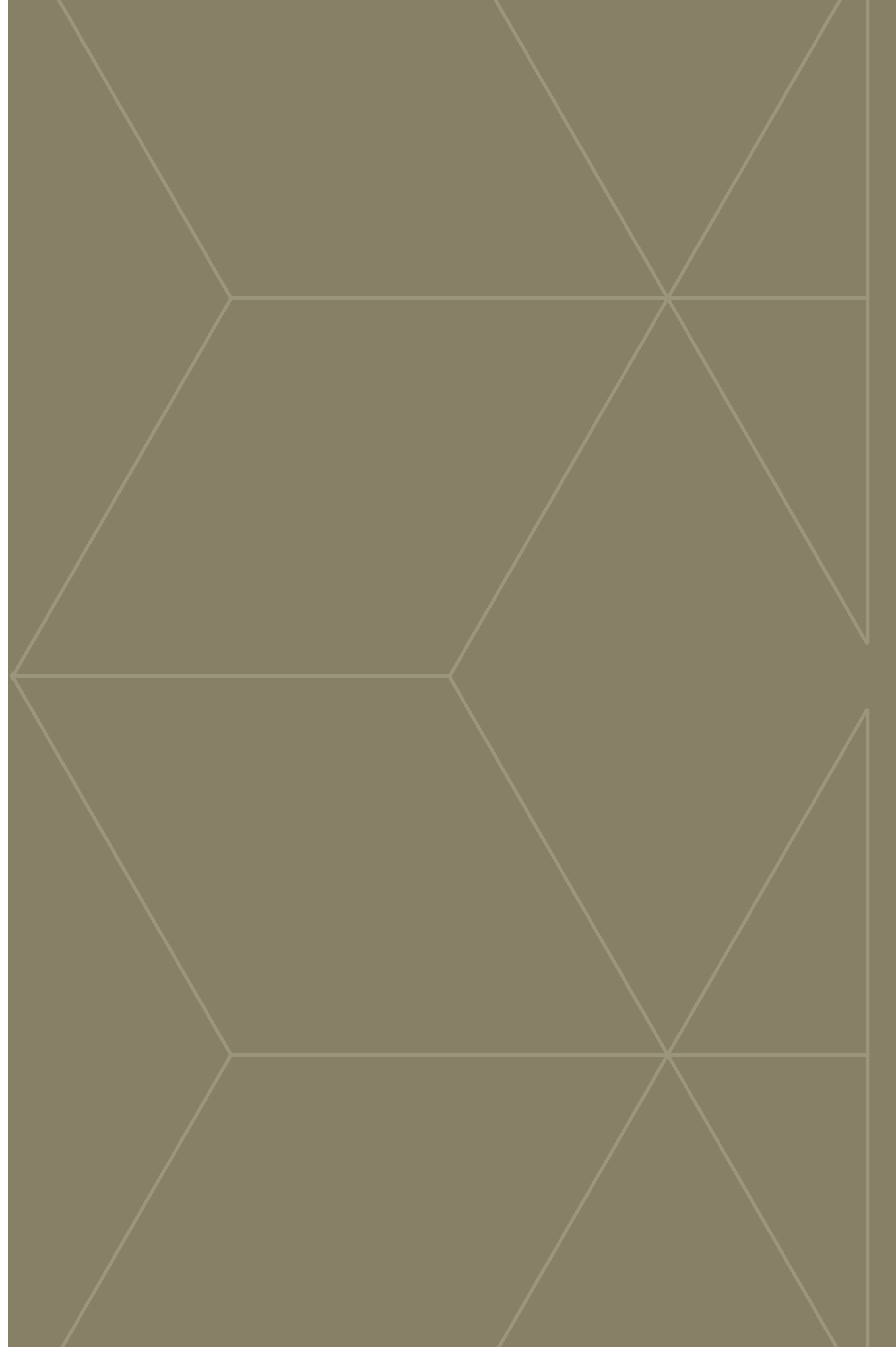
3 colori

MAUK ESA  
slimtech bsp naturale - lappata



↘ MAUK ESA

slimtech bsp sabbiata



LEA  
CERAMICHE



---

# LEA

CERAMICHE

**LEA CERAMICHE**

Via Cameazzo, 21  
41042 Fiorano Modenese  
Modena Italy

Tel. +39 0536 837811  
Fax +39 0536 830326  
info@ceramichelea.it  
www.ceramichelea.com



Ceramic Tiles of Italy